

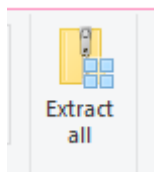
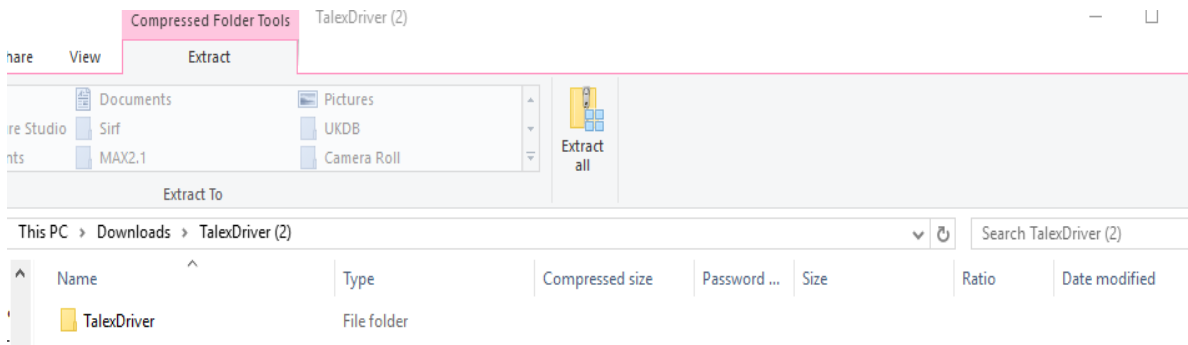


Updating the Talx TAL Device when using Windows 10

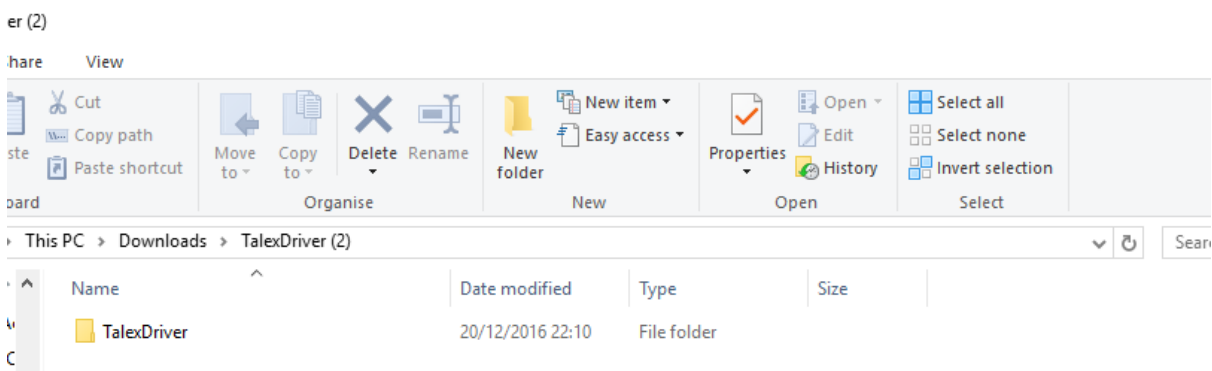
Suitable for Serial Numbers beginning TAL

Ensure that you have your USB Data Lead Plugged into your PC







[Download Talx Windows 10 Driver Here](#)



Click Extract All

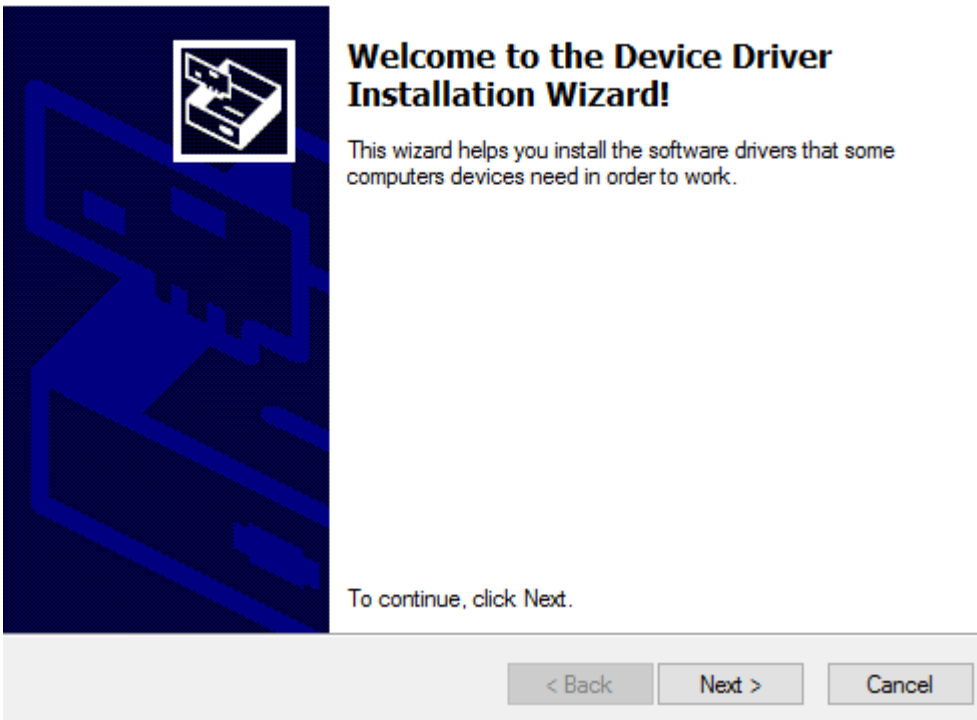


Double Click on Talx Driver

Name	Date modified	Type	Size
 br_mcu2usb	20/12/2016 22:10	Security Catalogue	8 KB
 br_mcu2usb	20/12/2016 22:10	Setup Information	2 KB
 br_mcu2usb.sys	20/12/2016 22:10	System file	23 KB
 RemoveReg	20/12/2016 22:10	Application	28 KB
 TalexDriver	20/12/2016 22:10	Application	1,024 KB
 Uninstall	20/12/2016 22:10	Application	103 KB

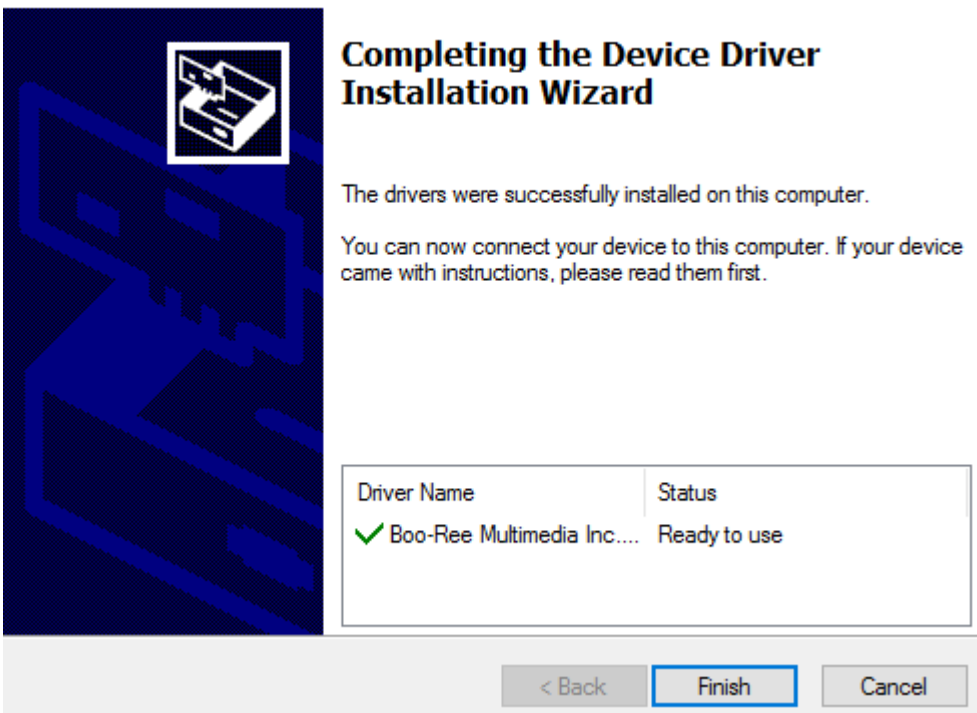
Then Talex Driver, and allow to make changes to your computer

Device Driver Installation Wizard



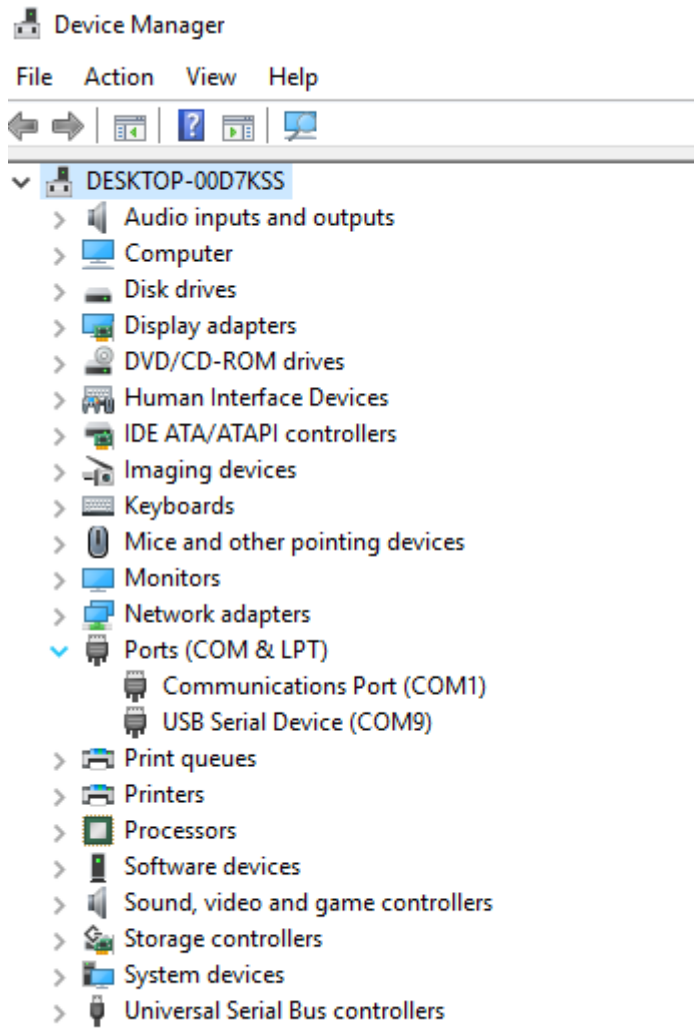
Click Next to run the Installation Wizard

Device Driver Installation Wizard



Then Finish

Locate Device Manager by Right Click on Windows Menu, then Left Click on Device Manager



Open the Drop Down Box under Ports, and you will see USB Serial Device (Com9),

Or will see under Universal Serial Bus Controllers, as Boo Ree

Now Run the Talex Updater